

Horn/Trumpet Transposition Exercise

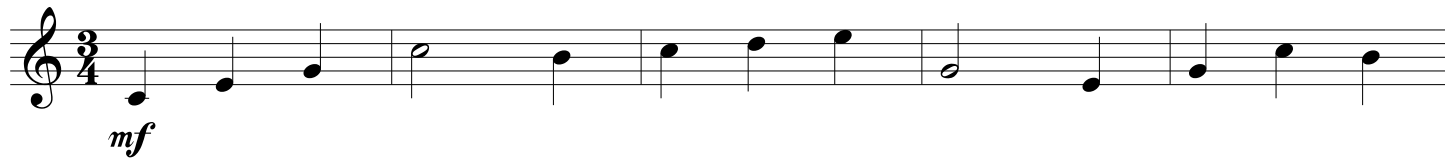
The audition panel will request that you transpose this short excerpt into another key

The image shows two staves of musical notation in 4/4 time. The first staff begins with a treble clef, a 4/4 time signature, and a dynamic marking of *mf*. The melody consists of the following notes: a whole note G4, a quarter note A4, a quarter note B4, a quarter note C5, a quarter note B4, a quarter note A4, a quarter note G4, and a whole note F4. The second staff continues the melody with the following notes: a quarter note E4, a quarter note D4, a quarter note C4, a quarter note B3, a quarter note A3, a quarter note G3, a quarter note F3, and a whole note E3. The piece concludes with a double bar line.

VYOA 2012 transposition exercise

for horn and trumpet

Maestoso



mf

