

2014 VYOA percussion sight reading exercises

Melodic Exercise #1

A Andante ♩ = 80

Musical notation for Melodic Exercise #1, first staff. Treble clef, 4/4 time signature, key signature of one sharp (F#). The staff begins with a dynamic marking of *mf*. The melody consists of quarter notes: F#4, G4, A4, B4, C5, B4, A4, G4, F#4. A hairpin crescendo is shown over the last three notes, ending with a dynamic marking of *p*.

Musical notation for Melodic Exercise #1, second staff. Treble clef, 4/4 time signature, key signature of one sharp (F#). The staff begins with a dynamic marking of *f*. The melody consists of quarter notes: F#4, G4, A4, B4, C5, B4, A4, G4, F#4. The staff ends with a double bar line.

Melodic Exercise #2

B Andante moderato ♩ = 96

Musical notation for Melodic Exercise #2, first staff. Treble clef, 3/4 time signature, key signature of one flat (Bb). The staff begins with a dynamic marking of *mf*. The melody consists of quarter notes: Bb3, C4, D4, E4, F4, G4, A4, Bb4. The staff ends with a double bar line.

Musical notation for Melodic Exercise #2, second staff. Treble clef, 3/4 time signature, key signature of one flat (Bb). The staff begins with a dynamic marking of *p*. The melody consists of quarter notes: Bb3, C4, D4, E4, F4, G4, A4, Bb4. The staff ends with a dynamic marking of *f*.

Musical notation for Melodic Exercise #2, third staff. Treble clef, 3/4 time signature, key signature of one flat (Bb). The staff begins with a dynamic marking of *f*. The melody consists of quarter notes: Bb3, C4, D4, E4, F4, G4, A4, Bb4. The staff ends with a double bar line.

Melodic Exercise #3

C Maestoso ♩ = 60

Musical notation for Melodic Exercise #3, first staff. Treble clef, 2/4 time signature, key signature of one flat (Bb). The staff begins with a dynamic marking of *f*. The melody consists of quarter notes: Bb3, C4, D4, E4, F4, G4, A4, Bb4. The staff ends with a dynamic marking of *p leggiero*.

Musical notation for Melodic Exercise #3, second staff. Treble clef, 2/4 time signature, key signature of one flat (Bb). The staff begins with a dynamic marking of *f*. The melody consists of quarter notes: Bb3, C4, D4, E4, F4, G4, A4, Bb4. The staff ends with a double bar line.

Musical notation for Melodic Exercise #3, third staff. Treble clef, 2/4 time signature, key signature of one flat (Bb). The staff begins with a dynamic marking of *mf*. The melody consists of quarter notes: Bb3, C4, D4, E4, F4, G4, A4, Bb4. The staff ends with a dynamic marking of *f*.

Rhythmic Exercise #1

A Andante sostenuto ♩ = 72

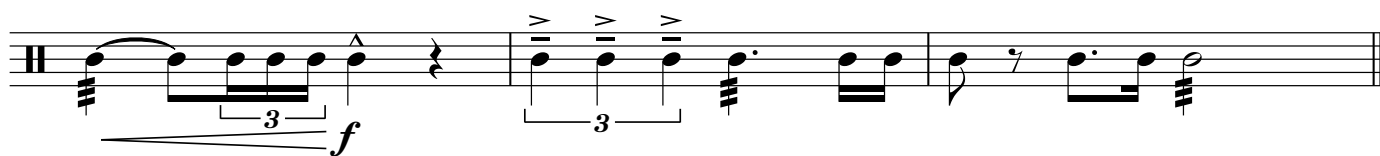
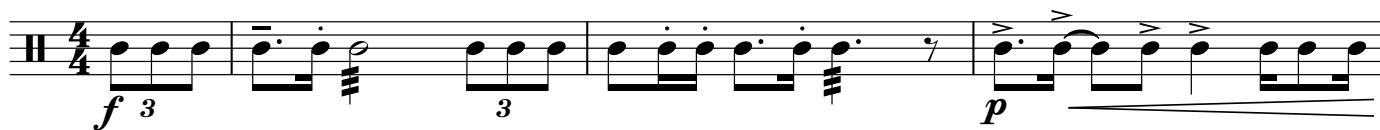
Rhythmic Exercise #2

B Andante sostenuto ♩ = 72

Rhythmic Exercise #3

C Andante sostenuto ♩ = 72

Rhythmic Exercise #4

D Andante sostenuto ♩ = 72

Timpani Sight Reading #1

A Moderato (♩=88)

Two staves of music in bass clef, 4/4 time. The first staff starts with a half note on C2 (mf), followed by quarter notes on D2, E2, F2, G2, A2, B2, C3, and a half note on D3 (mf). A dynamic marking *p* is placed under the first four notes, and *mf* is under the last two. The second staff continues with quarter notes on E2, F2, G2, A2, B2, C3, and a half note on D3. Dynamic markings *p* and *f* are placed under the first and last notes respectively.

Timpani Sight Reading #2

B Andante sostenuto (♩=72)

G, C → A, D

Two staves of music in bass clef, 4/4 time. The first staff starts with a half note on C2 (p), followed by quarter notes on D2, E2, F2, G2, A2, B2, C3, and a half note on D3 (f). A dynamic marking *p* is under the first note, *f* is under the eighth note, and *p* is under the last note. A fermata is placed over the last note. The second staff continues with quarter notes on E2, F2, G2, A2, B2, C3, and a half note on D3. Dynamic markings *p cresc.* and *f* are placed under the first and eighth notes respectively. A fermata is placed over the last note.

Timpani Sight Reading #3

C Andantino (♩=80)

Three staves of music in bass clef, 3/4 time. The first staff starts with a half note on C2 (mf), followed by quarter notes on D2, E2, F2, G2, A2, B2, C3, and a half note on D3 (p). Dynamic markings *mf* and *p* are under the first and last notes respectively. The second staff continues with quarter notes on E2, F2, G2, A2, B2, C3, and a half note on D3. Dynamic markings *mf* and *p* are under the first and last notes respectively. The third staff starts with a half note on C2 (crescendo), followed by quarter notes on D2, E2, F2, G2, A2, B2, C3, and a half note on D3 (f). A dynamic marking *crescendo* is under the first note, and *f* is under the last note. A fermata is placed over the last note.